



# FAMED

Żywiec



# HOSPITAL BEDS

## TRANSPORT TROLLEYS FOR PATIENTS

## PRODUCT CATALOGUE

[www.famed.com.pl](http://www.famed.com.pl)

All products are made of materials with antimicrobial/antibacterial properties.



tel.: 022 66 19 00 00, fax: 022 66 19 00 01, e-mail: biuro@famed.com.pl  
dla klientów z zagranicy: tel.: +48 22 66 19 00 01, fax: +48 22 66 19 00 02  
IBS Medical - 24h ul. Chłopska 100 00 6 002 6442 0000000000 - 0000 0000



## TABLE OF CONTENTS

1. Hospital beds
2. Transport trolleys for patients



A photograph of a young woman with blonde hair lying in a hospital bed, smiling at the camera. She is wearing a light blue hospital gown. The bed has white linens and a white pillow. In the background, there is a bedside table with a vase of pink and orange flowers, a blue folder, and a small electronic device. A hand is visible in the foreground holding a black tablet. The text "HOSPITAL BEDS" is overlaid in white on a semi-transparent blue rectangle.

# HOSPITAL BEDS

# Famed LE-13



## ADVANCED, COLUMN-BASED, ELECTRICAL ICU BED WITH LATERAL TILTS

Famed LE-13 is a bed intended for intensive care units (ICU) with structure supported by three stable cylindrical columns. It offers additional therapeutic functions and is equipped with a set of sensors improving patient's safety and effectiveness of the medical treatment. It is durable, built using antibacterial plastics and paints (pSilver™) and is fitted with easy to clean, X-ray translucent segments.



### POSITIONING THERAPY

Famed LE-13 offers side tilts for positioning therapy – they facilitate patient nursing and eliminate factors cumbersome for the medical personnel (e.g. lifting heavier patients, spinal column load). Stable column structure and advanced control systems guarantee high level of safety and functionality. The central panel indicates the backrest segment position (degrees). At 30° the movement is slowed down to enable setting the pallet in a convenient position (therapeutic requirement for different diseases, e.g. pulmonary).



### EASY HANDLING

The functions of Famed LE-13 facilitate everyday patient nursing: fifth wheel, integrated **certified weighing system**, X-ray device support, easily disinfected structural parts, quickly demountable tops, bed surface indicators, directional wheel. Bed cleaning is easy due to the use of ABS guards and **pSilver™** technology paints in Famed LE-13. Bed functions are operated using the central panel (with light intensity sensor to improve legibility), wired controller, hand rail panels and foot controllers (option).



### SAFETY

Patient's safety is ensured by reliable drive and control units, low height of the pallet and maximum load capacity of 250 kg. The built-in certified weighing system enables determining proper medicine doses, while the **fCharge™** battery allows to continue patient's nursing during the transport or in case of power supply failure. Additional functions, including call system and bed base lighting improve patient's comfort and safety. The bed is equipped with sensors preventing lateral tilt when side rails are lowered.

1





## MULTIPLE POSITIONS:

- Trendelenburg position (5),
- Reverse-Trendelenburg position (2),
- Fowler's position (1),
- Cardiological chair position (4),
- lateral tilt (6),
- electric CPR („0" position) (3),
- autocontour,
- examination position.

## FEATURES:

- selective lock and locking of individual functions using the central panel,
- bed surface extension possibility,
- double auto-regression function,
- central lock of the wheels, fifth wheel and directional wheel,
- certified weighing system,
- X-ray translucent HPL bed surface,
- cables and mechanisms casing for easy cleaning,
- backrest and legs section CPR,
- hooks for bags with body fluids,
- optional X-ray cassette tunnels,
- optional foot controller.



Length 2280 mm | Overall width 990 mm | Minimum height 485 mm | Maximum height 885 mm | Back rest segment inclination 70° | Thigh rest segment inclination 43° | Lateral tilt 25° | Trendelenburg position 15° | Reverse-Trendelenburg position 13° | Maximum load 250 kg



# Famed NANO

A BED WITH WIDE CHOICE OF ADJUSTMENT OPTIONS,  
WITH TWO COLUMNS

Famed NANO is a fully configurable electrically-driven hospital bed with a wide range of accessories and options that can be adjusted to your needs and expectations. It is durable and built with the use of antibacterial paints (pSilver™ technology). Column structure enables collision-free monitoring of patient during the hospitalization. Advanced functions allow to use this bed in intensive care units.



## FUNCTIONALITY

Famed NANO has been designed to combine high functionality with easy cleaning and disinfection. The column structure offers high level of safety, compatibility with monitoring equipment and high load capacity. The patient can use a lamp to lighten the floor around the bed and a personnel call button. The central panel allows to set therapeutic positions by pressing a single button.



## CONFIGURATIONS

The Famed NANO bed has a variety of configurable components. It allows to adjust it to the needs of all users. The Famed NANO bed features include: weight measurement system, bed surface extension, X-ray cassette tunnels, bedding shelf, equipment rail, patient's panels as well as other additional control components.



## SAFETY

Patient's safety is ensured by reliable drive and control systems, low bed surface height and double auto-regression mechanism. Safe lowered side rails are made in the pSilver™ technology ensuring bacteriostatic protection. Additionally, a minimum and constant spacing between movable parts is kept, which eliminates hand injury possibility. Bed stability is ensured by high quality wheels and a central lock system. The fCharge™ power supply maintains all patient treatment functions during the transport or in case of power failure.

1





## AVAILABLE POSITIONS

- Trendelenburg position (2),
- Reverse-Trendelenburg position (5),
- Fowler's position (4),
- Cardiological chair position (3),
- electric CPR („0° position) (3),
- autocontour,
- examination position.

## FEATURES

- locking of individual functions using the central panel,
- wide possibilities of bed adjustment and configuration,
- bed length extension possibility,
- double auto-regression function,
- central lock of the wheels, fifth wheel (optional) and directional wheel,
- optional weighing system,
- X-ray translucent HPL bed surface,
- optional X-ray cassette tunnels,
- electric CPR function,
- hooks for bags with body fluids,
- optional foot controller.



Length 2280 mm | Overall width 965 mm | Minimum height 390 mm | Maximum height 770 mm | Back rest segment inclination 70° | Thigh rest segment inclination 40° | Trendelenburg position 15° | Reverse-Trendelenburg position 15° | Maximum load 250 kg

# Famed NEXO



## ELECTRICAL, COMFORTABLE AND ECONOMICAL HOSPITAL BED

The affordable electric hospital bed designed with comfort, safety and early mobilization in mind. A product ideal for hospitals, long-term care units and ICU. A simple, field-proven construction and high durability is combined with advanced functions and an affordable price. Thanks to the Famed NEXO, you will provide comfort to a wider range of patients.



### COMFORT

Thanks to its **electrical control**, the Famed NEXO offers a wide range of available positions. The bed can be controlled by a central panel, a wired remote control or a control panel in siderails. For the convenience of hospital staff, the Famed NEXO has pre-programmed positions, accessible by pressing just a one button on the control panel, easy to use **SoftDrop™** siderails and angle indicators. The Famed NEXO can be lowered to a **very low height**, so that getting in/out of the bed is easy and safe. It also prevents the patient from injuries if he falls out of the bed. **The dedicated panel for early mobilization is a real added value to the patient recovery.**



### ECONOMY

The Famed NEXO bed has been designed to provide high versatility. It can be also used with **overweight or tall patients** (the bed length extension). In addition, the bacteriostatic **pSilver™** protection shortens the disinfection time and reduces the infection spread in the hospital. The construction of the bed base and control elements were designed to make cleaning as easy as possible and to shorten its time. The Famed NEXO is a bed where **legendary build quality meets well thought out access for a service team** to make easy and quick repairs on the site without custom tools. It guarantees a total cost of ownership (TCO) of virtually zero and **practically no downtime.**



### SAFETY

An economical hospital bed does not mean that we did even slightest compromise when it comes to safety standards. The Famed NEXO offers a high maximum load (**250 kg**) and high durability, confirmed by the third party test results and a positive feedback from **almost 100 countries all over the world**, where the Famed NEXO is present. All plastic and varnished elements were made using a bacteriostatic **pSilver™** technology. The high siderails along an entire length of the bed were designed to fully protect the patient. A central wheel lock ensures a stable position of the bed in a room. Between the various elements of the siderails there is a constant, safe distance, which prevents pinching of fingers or hands. A quickly detachable headboard can act as an **additional CPR support** under the patient in the event of resuscitation.







## FEATURES:

- pSilver™ technology - all plastic and painted elements are made with custom compound with silver nanoparticles - it is one of the best ways to support the HAI (Hospital Acquired Infections) prevention program in your facility;
- Dedicated panel for a three phases early mobilization program;
- Safe SoftDrop™ siderails - all gaps between the siderails and bed ends maintain a safe, fixed distance according to an international standard (EN 60601-2-52);
- The control panels are designed to make it easier for blind and partially sighted people to control the bed;
- Dedicated buttons for anti-shock position, examination position, Fowler, CPR or cardiac chair position;
- Locking of individual function of the hand remote control or patient controls using the central panel,
- High durability and stability of the bed ends with system of locking the boards in the bed frame;
- CPR lever located in the middle of the bed frame - visible and easy to reach even when the siderails are lowered;
- Removable headboard can be used as an additional CPR support under the patient in the event of a resuscitation;
- Bed structure has been designed to maximally reduce service cost and the repair time;
- X-ray translucent HPL bed surface (MAE 0,39 mm Al);
- Small distance from the floor (only 390 mm);
- Bed length extension;
- Unlocked wheels alarm when the bed is connected to the mains (option);
- Patient's exit alarm with three-stage sensibility adjustment (option).

## THREE PHASES OF EARLY MOBILIZATION

### It is not only about the ICU

Early mobilization is a crucial modern requirement for a modern hospital. To help the patient get out of the bed and do exercises, we have integrated a dedicated control panel for vertical mobilization in the bed. NEXO can help the patient to stand up and walk away from the bed, encouraging him to move and get back in shape. This is the final of the three mobilization phases on the NEXO bed.

## #2

First phase - the patient can use the panel integrated into the siderail to move the backrest up, higher and higher - as long as it is comfortable. For the ICU patients the staff should perform the action - use a 30° position or above to prevent VAP.

## #2

Reverse Trendelenburg position is set to test the ability of standing up. Patient can use the locked bed end as a support area for his feet. Some core exercises can be performed and a physiotherapist can start a muscle strength rebuild program.

## #3

If the patient is strong enough, he can use the dedicated panel to help him stand on his own. Anatomic hand support in siderail is equipped with up/down buttons to lift the patient up to the point where he can stand on his own.

## BED CONTROLS



Length 2180 mm | Overall width 985 mm | Minimum height 390 mm | Maximum height 800 mm | Back rest segment inclination 70° | Thigh rest segment inclination 40° | Trendelenburg position 16,5° | Reverse-Trendelenburg position 18,5° | Maximum load 250 kg

# Famed LP-02.1

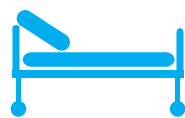
## DURABLE HOSPITAL AND REHABILITATION BED

Famed LP-02.1 bed is intended for hospitals, spa and rehabilitation facilities searching for a robust and simple solution. It can be used in the course of diagnosing, monitoring and treatment of patients. The bed pallet is made of paint coated steel.



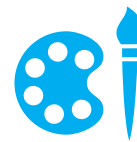
### QUALITY

Purchasing the Famed LP-02.1 bed you choose the famous quality of the manufacturing plant in Żywiec, Poland. This simple bed will satisfy the needs of your facility and guarantee its uninterrupted work. You can be sure of the product you are purchasing. The laboratory takes care of every phase of production and the final product passes through two quality control stations. This bed is entirely manufactured at our plant, so we control every single stage of its production.



### MATRESSES

Famed LP-02.1 bed can be delivered with a vapour-permeable, waterproof foam mattress, or another more advanced model, e.g. anti-bedsore passive mattress. The mattresses are available with covers in 13 colour options.



### HEAD AND FOOT BOARD VARIANTS

Famed LP-02.1 bed is offered with three variants of head and foot boards: plastic boards, chrome-plated steel with laminated board or painted steel with laminated boards. Side rails are available in two versions: steel - painted and chrome-plated. The colour and pattern of boards can be adjusted to the customer's requirements, based on the available templates.

### OPTIONAL ACCESSORIES:

- mattress with additional features (e.g. anti-bedsore passive mattress),
- hand grip,
- drip hanger,
- orthopaedic traction frame,
- central wheel or foot lock.




### FEATURES:

- durable, proven design,
- varnish and plastic parts with antibacterial additive in pSilver™ technology,
- safe folded rails,
- adjustable backrest.



Length 2190 mm | Overall width 965 mm | Minimum height 500 mm | Maximum height 500 mm | Back rest segment inclination 70° | Thigh rest segment inclination 0° | Trendelenburg position 0° | Reverse-Trendelenburg position 0° | Maximum load 170 kg



# PATIENT TRANSPORT **TROLLEYS**

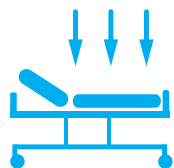


# Famed WP-09



## VERSATILE TRANSPORT TROLLEY

Famed WP-09 is trolley with columnar structure for transporting patients between rooms in hospitals and clinics. Stable structure allows to use it as a simple treatment tables. Equipped with X-ray translucent HPL boards with rigid structure improving the efficiency of the resuscitation procedure. This trolley can be equipped with two- or four-segment pallet and steel rails: painted or chrome-plated.



### X-RAY IMAGING POSSIBILITY

The trolley pallet segments are infilled with X-ray penetrable laminated panels. It is possible to monitor patient's chest using an X-ray apparatus with a C-arm. The columnar structure facilitates imaging and increases both the trolley's stability and maximum load capacity.



### EASY MOVEMENT

The trolley is equipped with four wheels with central wheel lock system and one wheel for straight movement – ideal for narrow corridors and frequent change of the place of usage. Large wheel radius facilitates overcoming obstacles and uneven surfaces. Equipping Famed WP-09 trolley with an additional optional fifth wheel further improves its operation.



### HIGH QUALITY

Famed WP-09 trolley is manufactured in Poland. The entire production process is performed at the plant in Żywiec, which enables us to control the quality of our product on a regular basis. Highest quality components will protect your trolley against damage and ensure many years of trouble-free operation.



### OPTIONAL ACCESSORIES:

- belts to secure the patient,
- four-segment pallet,
- fifth wheel,
- drip hanger,
- non-standard higher mattresses.

### FEATURES:

- height adjustment with hydraulic cylinders (foot lever),
- backrest adjustment with gas springs,
- Trendelenburg and reverse-Trendelenburg positions set by a hydraulic cylinder,
- thigh segment adjustment (gas spring),
- shin segment adjustment (four segment pallet, ratchet mechanism),
- central wheel locking accessible from all sides,
- instant handrail folding keeping a safe distance,
- X-ray cassette tunnel.



Length 2000 mm | Overall width 800 mm | Minimum height 560 mm | Maximum height 890 mm | Back rest segment inclination 70° | Thigh rest segment inclination 30° | Trendelenburg position 15° | Reverse-Trendelenburg position 15° | Maximum load 250 kg

# Famed SPARK



## ERGONOMIC AND ECONOMICAL PATIENT TRANSPORT STRETCHER

Famed SPARK is the next generation of a well-tested design that has proven its value by dozens of countries: economical, functional and durable stretcher for transporting patients. The antibacterial properties of plastics and varnished elements have been combined with low maintenance costs and unsurpassed durability.



### FUNCTIONALITY

The stretcher is compatible with mobile X-ray equipment (bedside X-ray, C arm) and tunnels for X-ray cassettes. Height adjustment levers available on both sides allow the patient to be supervised while changing the height at the same time. The stretcher is compatible with a range of accessories, such as a shelf for medical monitors, a fifth wheel, an oxygen tank holder and more. Optionally mattress with handles for patient transfer is available. We also have a choice of an Easy to use **two-segment (WP-02.0)** or **three-segment (WP-02.1)** mattress support pallet for easy positioning. The large-capacity basket for patient's belongings, located in the base, allows you to keep order.



### SAFETY

Siderails protect the patient over a length of more than 1500 mm. They have no sharp edges and no dangerous points that could pinch fingers. The high maximum load (SWL) of **250 kg** allows for safe transport of even heavier patients with the necessary equipment. Antibacterial nanotechnology with **pSilver™** nanoparticles additives in varnish, plastic elements and in the mattress cover facilitates disinfection and reduces the number of bacteria. Stable, large wheels facilitate transport even on rough surfaces, ensuring full stability of the stretcher.



### EASY HANDLING

Zero gap transfer between the bed and the stretcher when moving the patient - minimizes the strain on hospital staff and reduces the risk of falls. The siderails lower not only below the mattress, but also below the stretcher pallet itself - this facilitates safe sliding off the mattress when standing up and protects the rails against damage. There are as many as two pairs of handles to guide the stretcher through hospital corridors. Additionally there is another ergonomic push handle in the backrest. The directional wheel and the optional 5th wheel make maneuvering extremely easy, even with heavy patients.

### OPTIONAL ACCESSORIES:

- IV pole,
- Fifth wheel,
- Towel hanger,
- Oxygen tank holder,
- Tunnels for X-ray cassettes,
- Monitor shelf,
- Patient transfer mattress,
- Patient safety belt,
- Two additional lock levers.

### FEATURES:

- height adjustment with hydraulic cylinders (foot lever),
- backrest adjustment with gas springs,
- Trendelenburg and reverse-Trendelenburg positions set by a hydraulic cylinder,
- Foot lock and directional wheel levers,
- **SafeDrop™** siderails drop below mattress platform,
- Zero gap transfer between the bed and the stretcher when moving the patient.



Length 2040 mm | Overall width 790 mm | Minimum height 600 mm | Maximum height 900 mm | Back rest segment inclination 70° Trendelenburg position 23° | Reverse-Trendelenburg position 12° | Maximum load 250 kg

## TECHNICAL DATA

	LE-13	NANO	NEXO
Length	2280 mm	2280 mm	2180 (+320) mm
Overall width	990 mm	965 mm	985 mm
Adjustable height	485 - 885 mm	390 - 770 mm	390 - 800 mm
Back rest segment inclination	70°	70°	70°
Thigh rest segment inclination	43°	40°	40°
Lateral tilt	25°	-	-
Trendelenburg position	15°	15°	16,5°
Reverse-Trendelenburg position	13°	15°	18,5°
Wheels diameter	150 mm	150 mm	150 mm
Maximum load	250 kg	250 kg	250 kg
Control options	wired controller, central panel, side rail panels, foot controller	wired controller, central panel, side rail panels, foot controller	wired controller, central panel, side rail panels, early mobilization panel, foot controller

## Technologies used in products:



### fCharge™

All battery cells powering Famed Żywiec products are carefully selected from a reliable supplier we have been cooperating with for many years. Each **fCharge™** battery cell undergoes inspection at an external company, then goes through multiple tests at several technology departments of our factory. The **fCharge™**, fast charging technology charger used in our products allows for quick supply of the necessary amount of electricity to carry out the first treatments. A minimum of several dozen guaranteed full work cycles ensures safety in the course of performing every medical procedure.



### SoftDropPlus™

The SoftDropPlus™ system guarantees safety and comfort when operating a Famed Żywiec hospital bed. Thanks to the use of gas springs with a slowing mechanism, after releasing the handrail lock, it falls to its lower position in a controlled manner. Thanks to this, the movement is smooth, quiet and safe for the patient. The downward movement of the handrail can be initiated with one hand. Choosing the SoftDropPlus™ solution saves space on the sides of the bed, because the handrail hides as close as possible to its frame. Siderails have profiled handles to facilitate getting up from a lying position as well as getting out of bed and standing. Dedicated patient keypads have 3D printouts that facilitate operation for the blind and visually impaired. Dedicated early mobilization system allows you to activate the patient faster.



### pSilver™

All ABS elements were made using **pSilver™** technology. The prefabricate contains silver nanoparticles, which we use in the process of plastics production, provides effective bacteriostatic protection. The use of **pSilver™** technology in the places that are most often touched by patients limits the proliferation of dangerous bacteria, fungi or viruses. The **pSilver™** technology also involves a process of plastic element processing providing a smooth surface, whose texture prevents the accumulation of impurities.



LP-02.1	WP-09	Famed SPARK WP-02
2190 mm	2100 mm	2040 mm
965 mm	800 mm	790 mm
500 mm	560 - 890 mm	600 - 900 mm
70°	70°	70°
-	30°	(leg segment) -35°
-	-	-
-	15°	23°
-	15°	12°
125 mm	200 mm	200 mm
170 kg	250 kg	250 kg
-	-	-

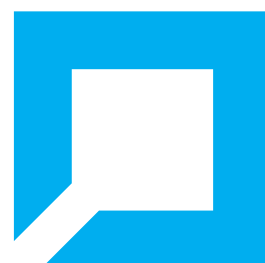


## SafeDrop™

SafeDrop™ siderails drop below the pallet along their entire length, without creating any obstacle for the patient when leaving the stretcher. Thanks to the wellthought-out structure, the space between the stretcher and a hospital bed or operating table during transfer has been lowered practically to zero. SafeDrop™ siderails perfectly cooperate with the siderails of our beds. This ensures greater patient safety with less physical workload for the staff. SafeDrop™ siderails can be lowered and raised with only one hand. The streamlined shape and lack of sharp edges ensure safety and prevent cuts and accidental finger pinching.

## Auto-regression function

The backrest and shin adjustment mechanism is equipped with the lumbar section support reverse movement system, allowing to achieve a comfortable distance between the seat and the shin support segment. This function is defined as the double regression and its purpose is to reduce the excessive pressure within the lumbar and shin section in the sitting position. Excessive pressure on tissues, causing damage to capillary vessels, which results in damaging these tissues and occurrence of wounds and ulcers, is one of the causes of bedsores. The reduction of this excessive pressure is therefore a preventive action in anti-bedsores therapy, supporting quick recovery of the patient.



**Famed Żywiec Sp. z o.o.**

Fabryczna 1  
34-300 Żywiec, Poland

**Office:**

tel.: +48 33 866 62 00

fax: +48 33 475 58 90

**Export:**

tel.: +48 33 866 62 58

fax: +48 33 861 46 78

export@famed.com.pl

www.famed.com.pl



Edition 63/2021/08/7. Famed Żywiec reserves the right to modify the product and specification as part of technical progress. All illustrations and photos used in this material are for illustrative purposes only and may not reflect the finished product. The people shown in the photos are not medical professionals. They are models. The device presented in the catalog is intended for use in health care facilities by authorized persons after having read the manual (IFU).

