

Nailfold Video Capillaroscopy for Scleroderma Screening

INSPECTIS® Digital CAP Light



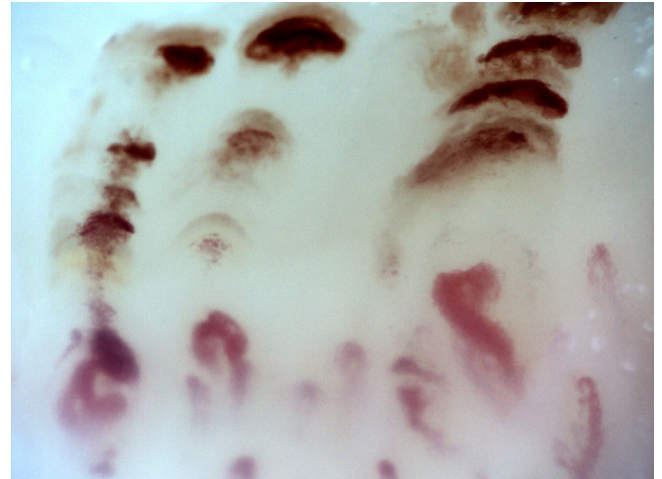
For Assessment of Pathological and Morphological Changes in Skin Capillaries

Non-invasive and Efficient Diagnostic Tool

Capillaroscopy is a non-invasive and safe method for morphologic examination and analysis of microcirculation abnormalities related to rheumatic disease, especially systemic sclerosis. In particular, Capillaroscopy is recognised as an efficient tool to assist in the diagnosis of diseases such as primary or secondary Raynaud's phenomenon, systemic sclerosis, systemic lupus erythematosus, mixed connective tissue disease, vasculitis or other disorders.



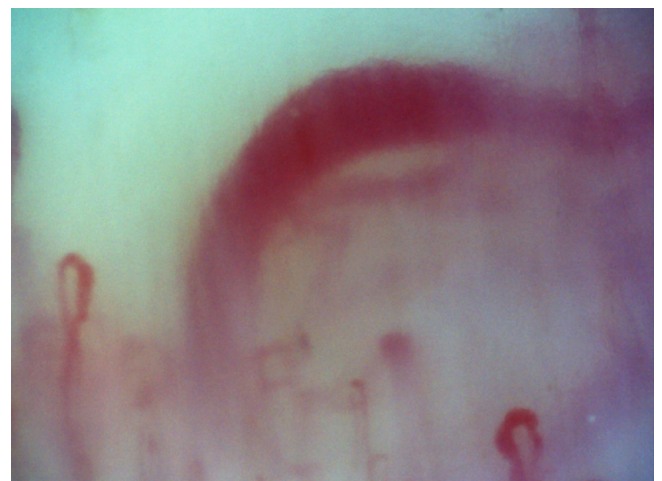
Normal Pattern



Active Scleroderma Pattern



Early Scleroderma Pattern



Late Scleroderma Pattern

Images courtesy of Florian Meier and Inspectis.

Inspectis high resolution Digital Capillaroscopy micro-scopes deliver crisp live images driven and supported by INSPECTIS® software with powerful and intuitive tools for consistent and efficient examinations, reporting and follow-up.

Flexible Assessment

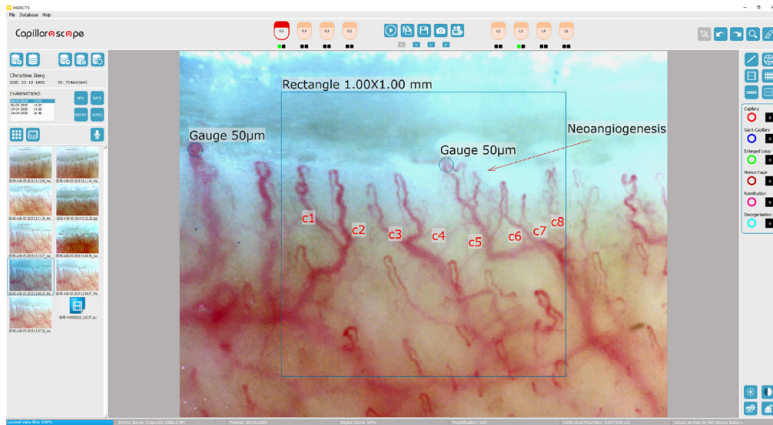
INSPECTIS® CAP Basics provides easy and intuitive tools for live image view and capture of capillaries, counting, annotations, and image saving.

Assessment of saved images can be made during or after an examination. Accuracy is assured with pre-calibrated lens magnification.



"Designed for Ergonomic use"

Developed with emphasis on time efficiency



INSPECTIS® CAP Pro offers the doctors advanced powerful tools for Scleroderma Screening according to internationally recognised capillaroscopy examination standards.

Advanced image analysis and measuring features ability to perform follow-up and check-ups and ability to produce medical reports under national and international standardized guidelines

Best instrument for assessment of pathological and morphological changes in skin capillaries.

INSPECTIS® CAP Software	Basics	Pro
Vivid and responsive live video display	●	●
Easy freeze and capture of calibrated images	●	●
Movable 1mm square for assessing capillary density	●	●
Counting and notation tool for Capillaries and abnormal morphology with customizable settings	●	●
Size (linear) assessment tool calibrated to working lens	●	●
Contrast, Brightness and Colour Control	●	●
Calibrated Measurements	●	●
Adjustable Grid, Rectangle, Crosshair	●	●
Manual Windows based folder and file management of images and data	●	●
Movable 50 microns gauge for quick capillary thickness assessment		●
Patient record with customizable data Fields		●
Patient Examination retrieval		●
Examination Data Summary Sheet presenting all assessed data		●
One click entry of assessed data to examination summary sheet		●
Hand and Finger image and data mapping and workflow assistance		●
Follow up finger tagging		●
Detailed notation entry with customizable template creation		●
Report creation in PDF with Customizable attributes		●
Audio Memo and Video Recording, fully integrated		●
Compare live to still or still to still images (live with saved or up to 4 saved images)		●
Overlay Images, compare with adjustable transparency		●
Capillary Image Contrast Enhancement		●
Image gallery		●
Case image and data export		●
Examination data to worksheet export (Licensed Microsoft Excel installation required)		●
Advanced Search and Sort		●
Encrypted Database for complete patient case management features		●
Multiple database handling		●
Create new databases		●
Edit, copy and move cases between databases		●
Auto and manual data base back up		●

“Configurable with different Hardware and Software levels”

System Specifications

System	
Sensor Type	1/2.5" Colour CMOS 2592H x 1944V Pixels
Lens	High-resolution 200x magnification with built-in light, FoV ~ 1.8 x 1.35 mm @ 3MP
Illumination	Integrated pure white LED ring light, Colour Temperature 5800K (Kelvin)
Aspect Ratio	4:3 at 5MP and 3MP mode. 16:9 at Full HD mode
Pixel Size	2.2 x 2.2 µm
Interface	USB 3.0 (backwards compatible with USB 2.0)
Video formats @ frame rate (max)	2592×1944 (5 MP) @ 15 fps, 2000 x 1500 (3MP) @ 22 fps, 1920 x 1080 (Full HD) @ 30 fps, 640 x 480 (binning) @ 57 fps
Adjustable parameters	Brightness, contrast, sharpness, gamma, HDR and resolution
Software	INSPECTIS© CAP Basics
Dimensions, Weight	135 x 50 x 37 mm, 190 g
Stand Mount	Standard Camera mount UNC 1/4" - 20

Ordering number Capillaroscopy System:

Item name	Order No.
Inspectis Digital Nailfold Capillary System Light	DM-05
Items included:	
- Capillaroscopy Digital Microscope with built-in 200x lens, contact adapter and illumination	
- INSPECTIS© CAP Basics software	
- Immersion Oil Dropper	

Ordering numbers Optional Accessories:

Item name	Order No.
INSPECTIS© CAP Pro software with patient database	IN-026
Capillarscope Stand with XY-Stage	IN-035
Desk-top Holder for Capillarscope	IN-036
Immersion Oil Dropper	IN-024
Single-pedal Foot Switch	IN-033
Triple-pedal Foot Switch	IN-034
Carrying Case	IN-037
Health Care Cart	IN-040



Quality of Inspection

Certified ISO 13485 Medical devices quality management systems