

MINICAP

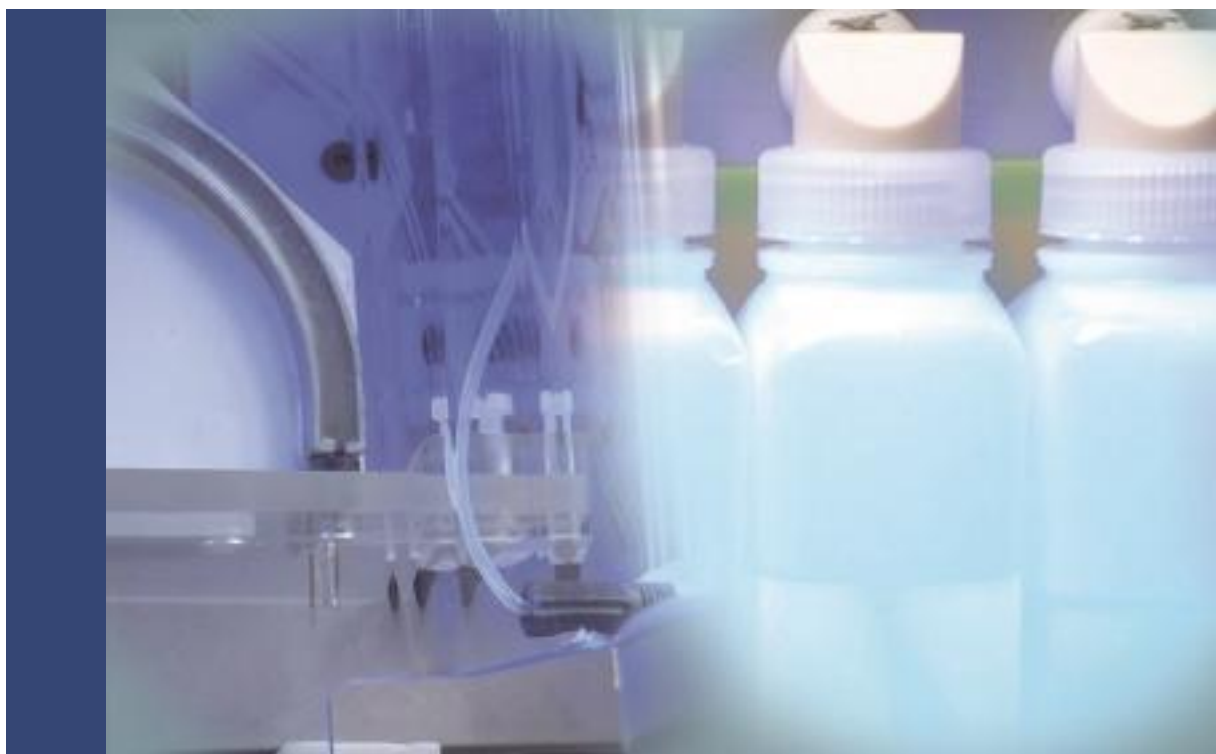
THE SEBIA CAPILLARY ELECTROPHORESIS AUTOMATED SOLUTION FOR SMALL TO MEDIUM SIZE LABORATORIES

The MINICAP instrument offers flexibility for small to medium size laboratories. The fully automated instrument meets the needs of the laboratory while providing clear-cut and precise separations utilizing the capillary electrophoresis technology. This multi-parameter instrument offers a comprehensive menu on serum, urine and packed red blood cells for Protein, Immunotyping, Hemoglobin and CDT (Carbohydrate Deficient Transferrin) testing.

The instrument provides complete walk-away automation reducing overall labor requirements.

TEST MENU

- PROTEIN(E) 6
- URINE
- IMMUNOTYPING 6
- IMMUNOTYPING URINE
- CDT
- HEMOGLOBIN(E)



TECHNICAL CHARACTERISTICS

Autonomy

- Continuous sample loading
- Tubes capacity:
 - Protein and urine: 28 samples
 - Hb and CDT: 26 samples

Throughput

- Protein: 20 tests/h
- Hb: 9 tests/h
- CDT: 10 tests/h

Sample types

- Serum
- Urine
- Packed unwashed RBCs



Positive ID & Reagents Traceability

- Barcoded carousel and tubes
- High resolution built-in barcode reader
- Positive sample identification
- Full traceability from primary tube to final result
- Barcoded reagents and controls

Sampling mode

- Full automation with continuous loading
- Direct sampling from primary tubes

Capillaries

- 2 silica capillaries for 2 simultaneous migrations
- Migrations performed in capillaries at accurate temperature controlled by a Sebia proprietary Peltier based regulation device

MINICAP

- Software: operated by Phoresis CORE
- Weight:
 - 66 lb
 - 30 kg
- Dimension:
 - (L) 17 x (W) 22 x (H) 16 in
 - (L) 43 x (W) 57 x (H) 41 cm
- Catalog number: PN 1230
- Related accessories not provided with instruments:
 - Screen, PC, UPS and printer



MINICAP PROTEIN(E) 6

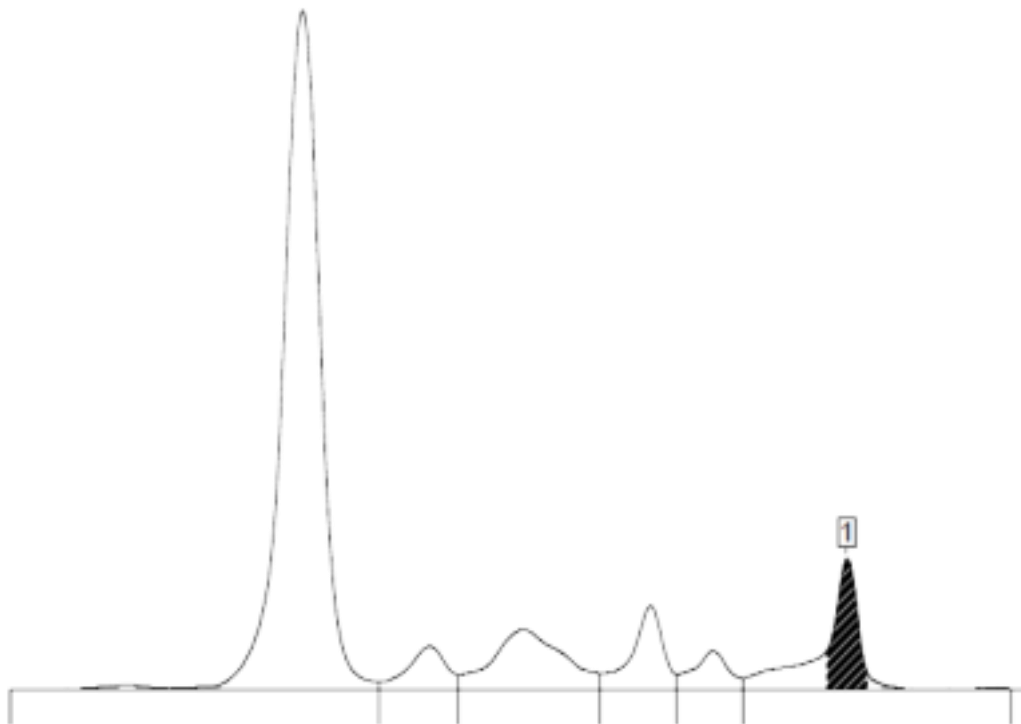
FULLY AUTOMATED SERUM AND URINE PROTEIN CAPILLARY ELECTROPHORESIS FOR SMALL TO MEDIUM SIZE LABORATORIES

TEST PRESENTATION

Protein electrophoresis is a well-established technique routinely used in clinical laboratories to screen samples to detect protein abnormalities (gammopathies, inflammatory pattern...).

Using the MINICAP instrument, the MINICAP PROTEIN(E) 6 kit enables the separation of:

- Serum proteins into six major fractions:
 - Albumin
 - Alpha-1
 - Alpha-2
 - Beta-1
 - Beta-2
 - Gamma
- Urine proteins into five zones, for simpler interpretation:
 - Albumin
 - Alpha-1
 - Alpha-2
 - Beta
 - Gamma



MINICAP instruments automatically process the samples to obtain protein profiles for qualitative and quantitative analysis. Direct UV detection provides accurate relative quantification of the individual protein fractions. Profiles can be interpreted visually to screen for any pattern abnormalities.

Serum and urine protein electrophoresis are essential to detect and quantify monoclonal components for the diagnosis and monitoring of patients with monoclonal gammopathies ([Multiple Myeloma](#), [MGUS](#), Waldenström disease...).

TEST PRINCIPLE

The MINICAP PROTEIN(E) 6 assay is based on the principle of capillary electrophoresis in free solution. Serum and urine proteins are separated in silica capillaries by their electrophoretic mobility and electroosmotic flow at high voltage in an alkaline buffer. Proteins are directly detected during migration by UV absorbance. Each fraction contains one or more proteins.

Two modes are available for manual peak quantification:

- Valley to valley
- Baseline to top

PERFORMANCES

- Throughput: 20 tests/h
- Sensitivity:
 - Internal study has demonstrated that a monoclonal protein can be detected at a concentration as low as 26 mg/dL. According to the mobility of the monoclonal component and polyclonal background, the sensitivity may vary.
- Full traceability and positive ID for serum samples and reagents

KIT DESCRIPTION

MINICAP PROTEIN(E) 6 (PN 2203) kit content:

- Buffer
- Wash solution
- Reagent cups
- Filters
- Bins for used cups

Related products and accessories not provided in the kit:

- Quality controls:
 - Normal control serum (PN 4785)
 - Hypergamma control serum (PN 4787)
 - IT/IF control (PN 4788)
- [MINICAP IMMUNOTYPING](#) (PN 2300)
- [CAPILLARYS/MINICAP URINE](#) (PN 2013)
- SEBIA dialysis system (PN 9200)
- FLUIDIL (PN 4587)
- CAPICLEAN (PN 2058) - only for MINICAP instrument
- CAPICLEAN MINICAP (PN 2251) - only for MINICAP FLEX-PIERCING instrument
- CAPIprotect (2 x 5L) (PN 2061)